



ELECTRIC ALL-TERRAIN LITTER VACUUM

# LR50 VEV

*Lithium battery pack with up to 9 hours autonomy*

 **Madvac**®

Sourcewell   
Formerly NJPA

 **canoe**  
procurement group of canada

awarded contract vendor

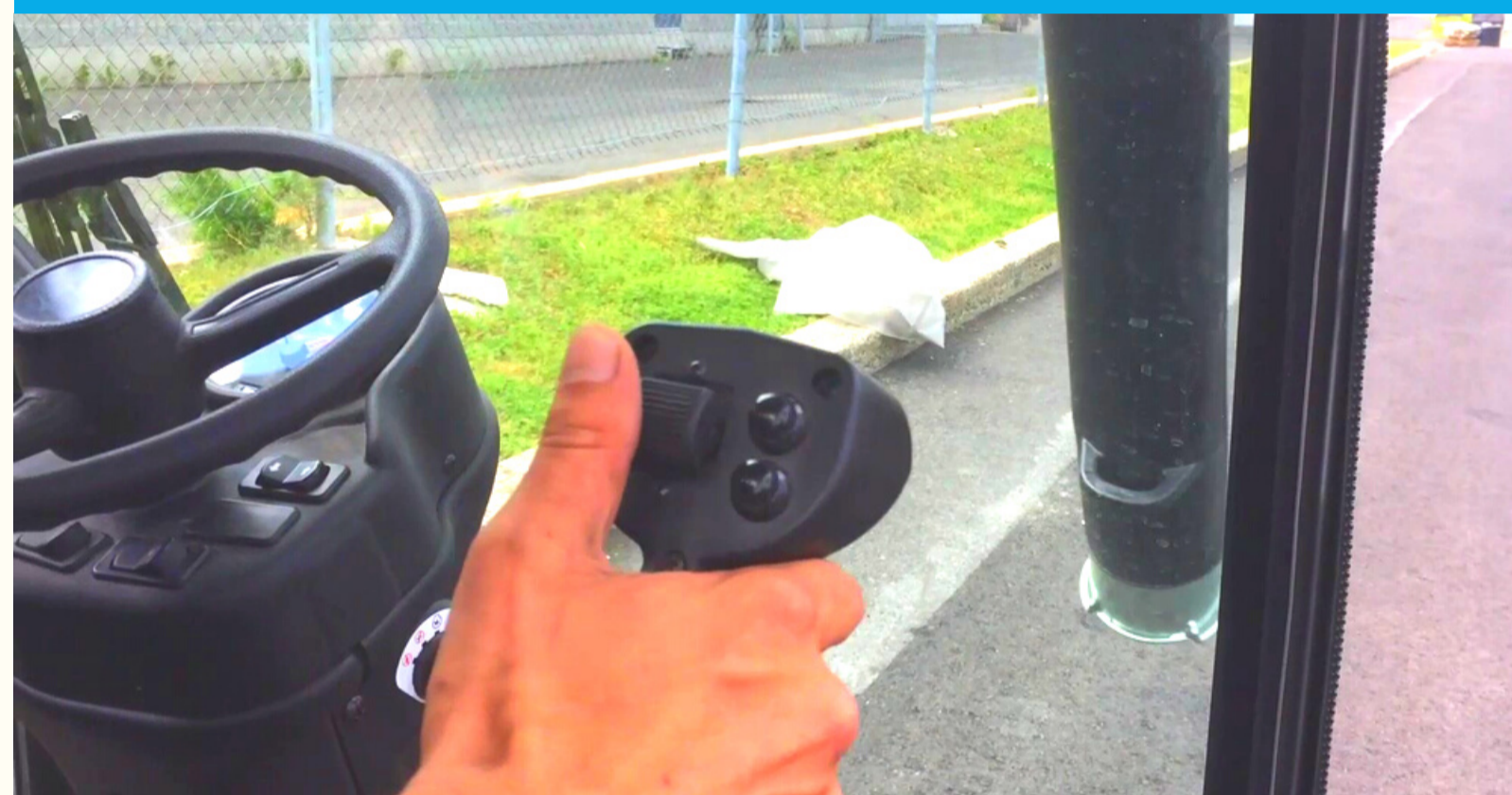
[www.madvac.com](http://www.madvac.com)

# From concrete to grass, the electric LR50 can tackle all types of urban terrain with ease

- Parks
- Sidewalks
- Bike & pedestrian lanes
- Parking lots
- Curb side
- Alleys
- Pathways
- Alongside buildings

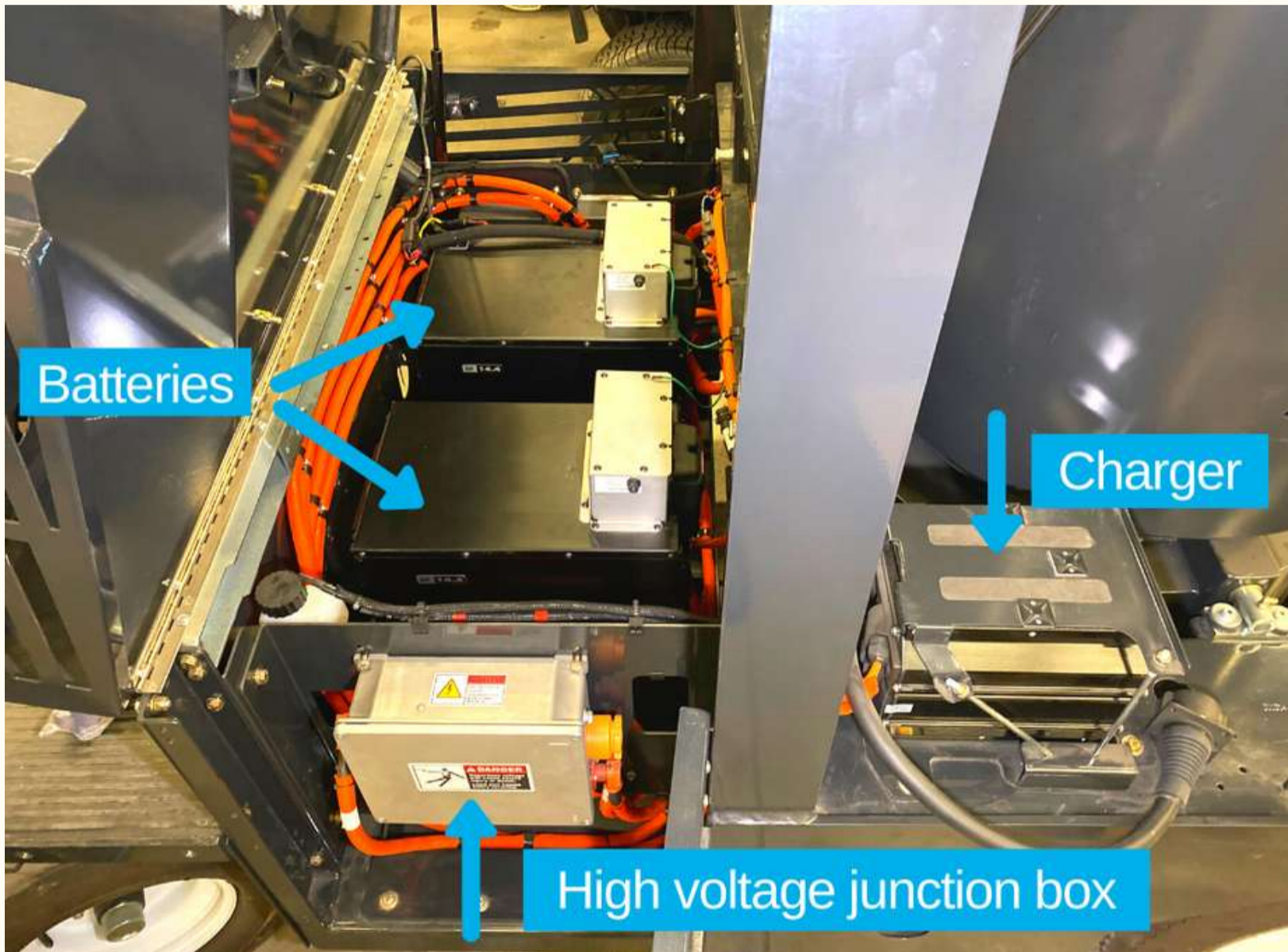


Ergonomic 6-position robotic joystick allows effortless displacement of the boom



## LR50 is the perfect all-terrain litter solution for

- Cities & municipalities
- Outdoor cleaning contractors
- Airports & seaports
- Transit authorities
- Healthcare services
- Distribution centers
- Shopping malls
- Educational & sports facilities
- Manufacturing facilities
- Amusement parks
- Casinos
- Military
- Correctional facilities



Batteries

Charger

High voltage junction box

## Built to suit your needs

*Configure the LR50 according to your specific requirements*

- 48 in. (1219 mm) vacuum head
- Retractable wander hose
- Litter collector bags or bagless debris system (Kevlar bin)
- Water mist system (additional dust control)
- Enclosed cab with heated or non-heated windshield and vinyl doors
- Heated seat
- Fan for operator comfort
- Rear-view camera
- Tire flatproofing
- Fire extinguisher

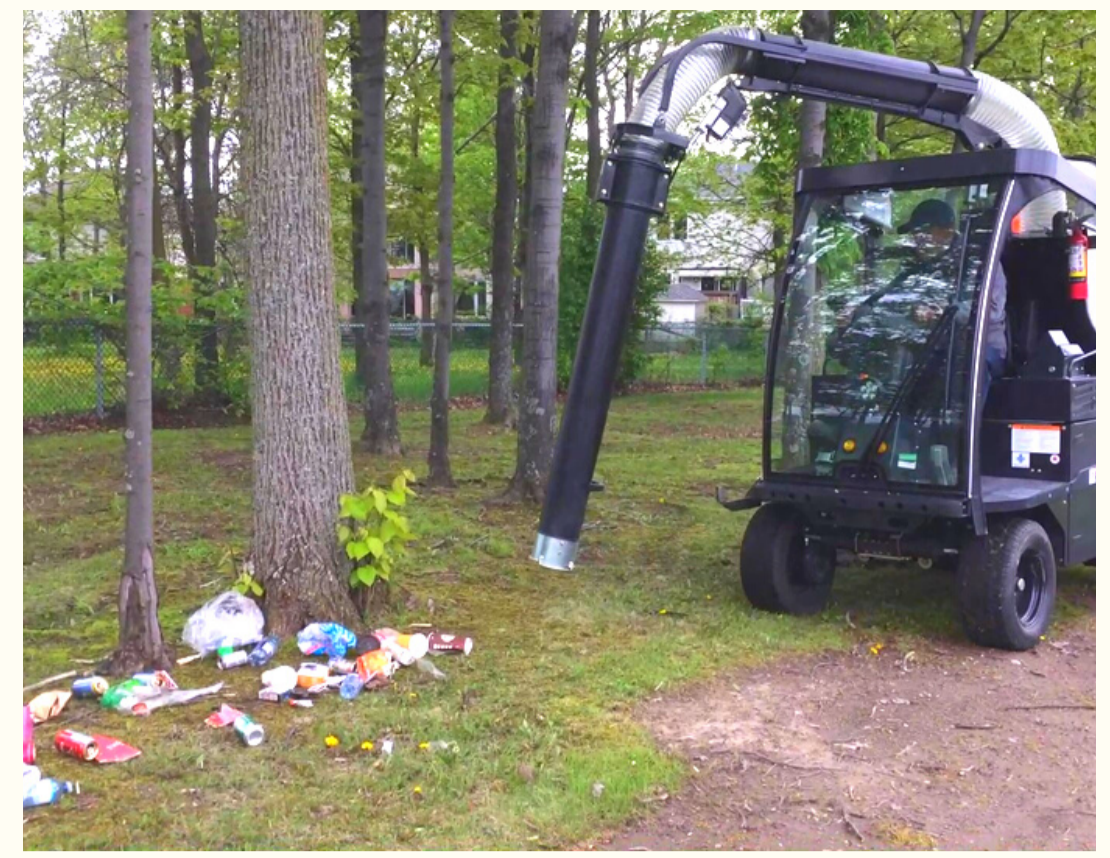


## Key Attributes

- LR50 runs using one of the best compact battery models on the market - Lithium-Ion nickel manganese cobalt (Li NMC), providing up to 9 hours of autonomy and 3 times better "energy per weight and volume" ratio in the industry;
- Significant noise reduction compared to diesel model - operator dB 82
- Robotic vacuum arm with 6-position joystick makes litter picking easy and injury free;
- Closed cabin (vinyl doors) with climate control options for operator comfort;
- Productivity 6 times faster than manual litter picking;
- Collects litter dry, humid or wet;
- Effortless litter removal using 48 in. (1219 mm) wide vacuum head;
- 15 ft. (4.57 m) retractable wander hose for hard-to-reach areas;
- A CDL permit is not required to operate this machine;
- Fully street legal lighting;
- 10 to 12 year lifespan;
- OEM spare parts shipped within 48 hours;
- Madvac has a 30+ years track record of success - when your machine is due for replacement we'll still be around.



SAE charger J1772



# Madvac LR50 VEV

## Data & Performance Information

### Power

|                |   |
|----------------|---|
| Power pack     | Lithium-Ion nickel manganese cobalt (Li NMC) high energy capacity, up to 28.8 k/h |
| Voltage        | 102 volts battery packs (2)   |
| Charger        | Integrated chargers 6kW on board  |
| Charger outlet | J1772 level 2, 240V/24A   |
| Charging time  | 5 hours (15-18 h if 120-v wall socket)  |
| Autonomy       | Up to 9 hours   |

### Litter Collection System

|                        |  |
|------------------------|--|
| Type                   | Straight-through system compacts litter at 2:1 ratio         |
| Litter capacity        | 75 gal. (284 L)  |
| Container construction | 16 gauge powder-coated steel                                 |
| Vacuum hose            | 7 in. (178 mm)   |
| Wander hose            | Diameter: 6 in. (152 mm); length: 15 ft. (4.57 m)            |
| Bagless system         | Kevlar bin can be filled and emptied into off-the-shelf bags |

### Frame and Body

- Heavy gauge steel body on a welded 1/4 in. (6.35 mm) structural steel frame
- Electrostatic powder-coated paint

### Dimensions

|                  |                   |
|------------------|-------------------|
| Width            | 48 in. (1219 mm)  |
| Length           | 96 in. (2438 mm)  |
| Height           | 104 in. (2641 mm) |
| Wheelbase        | 69 in. (1753 mm)  |
| Ground clearance | 10 in. (254 mm)   |

### Vacuum System

|               |                |
|---------------|----------------|
| Vacuum rating | Up to 1800 CFM |
|---------------|----------------|

### Controls

|            |  |
|------------|--|
| Steering   | Power assisted                                 |
| Propulsion | Forward, neutral, reverse; push button shifter |

### Traction

|                      |   |
|----------------------|---|
| Drive                | Propulsion with 17 to 1 ratio                   |
| Forward speed        | 12 mph (19 km/h)                                |
| Tires (all 4 wheels) | Regular 20.5 in. (521 mm); Turf 20 in. (508 mm) |
| Brakes               | Drum service brakes with magnetic parking brake |
| Gradeability         | 11.3 degree (20%)                               |
| Curb weight          | 2692 lbs (1221 kg)                              |

### Suspension

|       |             |
|-------|-------------|
| Front | Leaf spring |
| Rear  | Leaf spring |

### dB Rating

|              |       |
|--------------|-------|
| Cabin        | 82 dB |
| 10 feet away | 85 dB |



Proud manufacturer of the Madvac product line

#### Telephone:

- 1-855-651-0444 (toll free - US/Canada)
- 1-450-651-0444 (international)

**Fax:** 450-651-0447

**Email:** info@exprolink.com

**Address:** 2170 Rue de la Province

Longueuil QC  
Canada J4G 1R7

**Website:** [www.madvac.com](http://www.madvac.com)

**Sourcewell** (US) and **Canoe**

(Canada) contract vendor

number: **093021-EXP**

*Technical specs are subject to change without prior notice*