



Green California Summit

# AB 32 & the Financial Meltdown

F. Noel Perry

*March 18, 2009*



## About Next 10

- Founded in 2003
- Independent, Nonpartisan, Nonprofit
- Focus: Budget, Infrastructure, Green Economy
- Commissions expert research to educate, engage and empower Californians
- Website: [www.next10.org](http://www.next10.org)

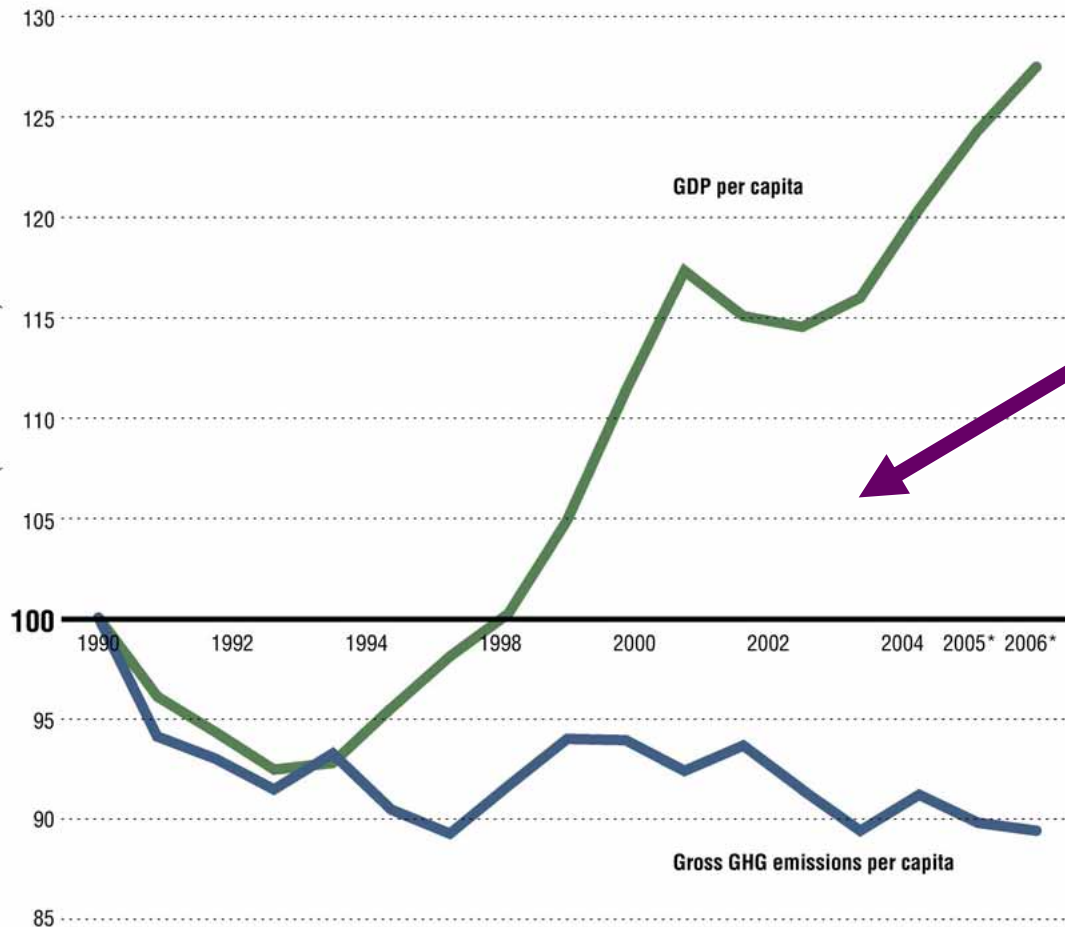
*Budget Challenge*

*CoolCalifornia.org*

*Expert Research*



# EMISSIONS AND GDP

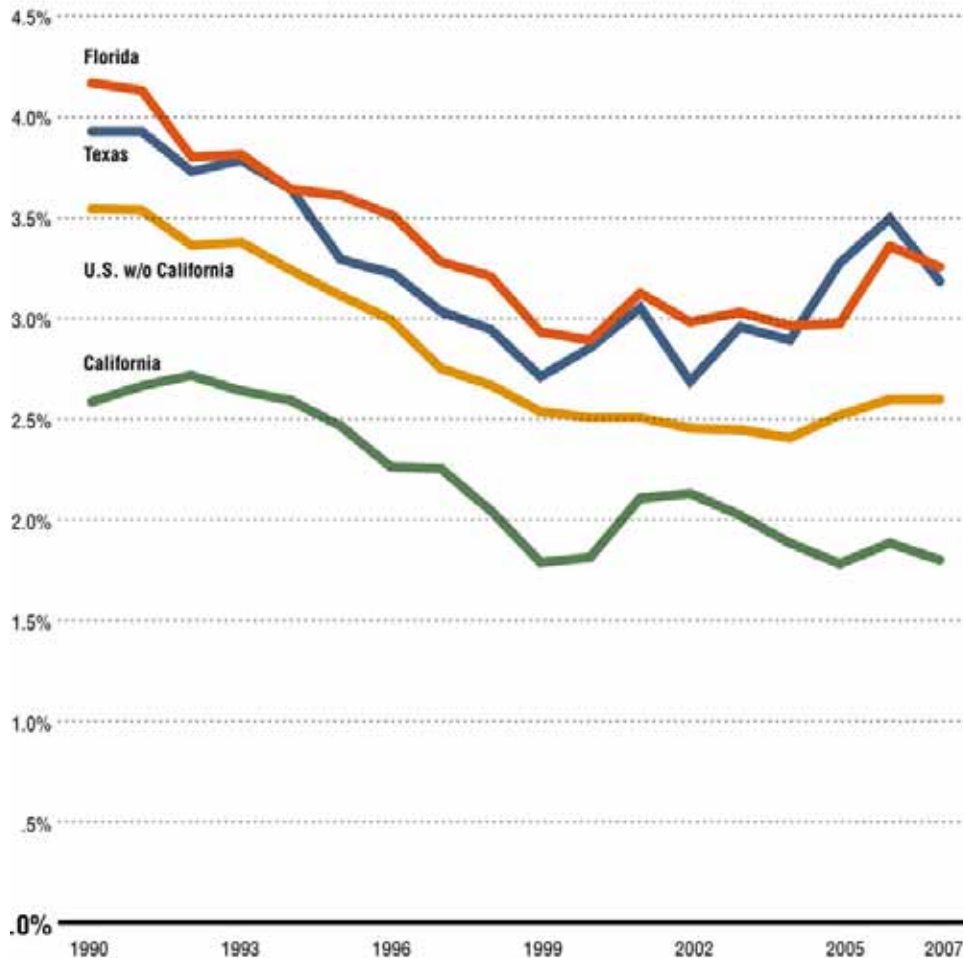


As we see with the widening gap, CA's economic growth is increasingly less dependent on the production of greenhouse gases.

CA's energy productivity is **68% higher** than the U.S.



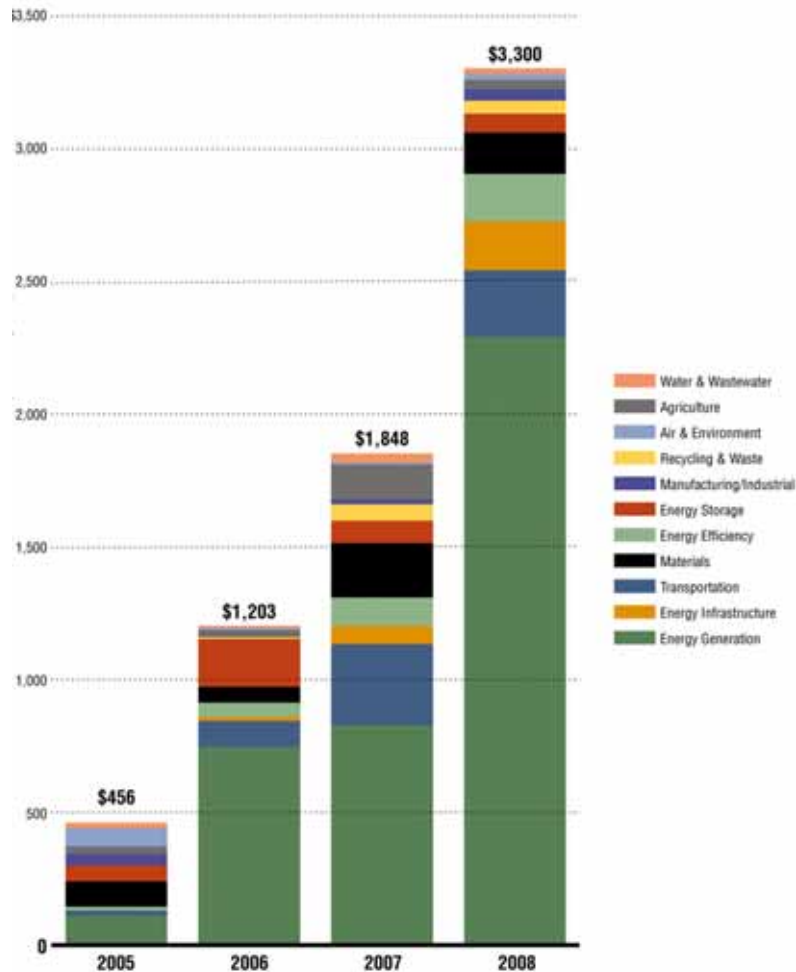
# STATEWIDE ELECTRICITY BILL



California has the 5th lowest electricity bill as a fraction of GDP. CA spends half as much on electricity as Texas -- a difference of **\$25 billion** each year that Californians can spend on other things.



# 2008 VC INVESTMENT IN CLEAN TECH

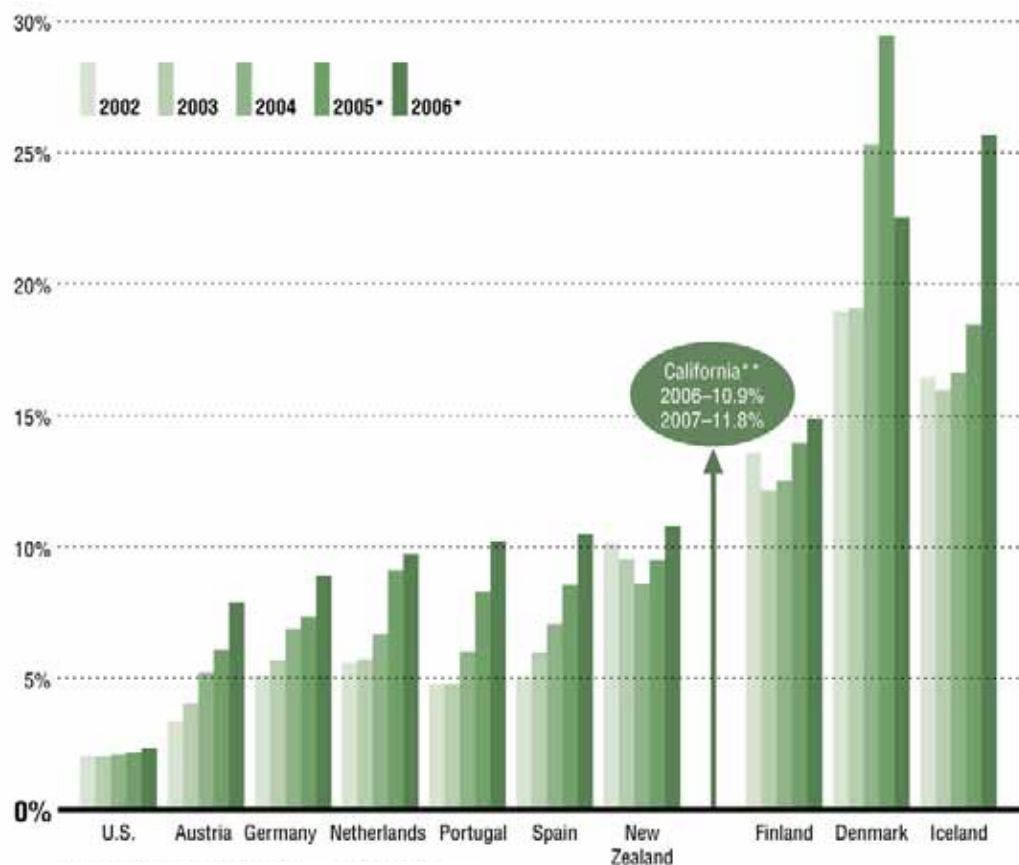


California attracted 57% of all clean tech VC investment in 2008 for a total of **\$3.3 billion**.

69% was in Energy Generation.



# RENEWABLE ENERGY GENERATION



CA generates **12% of its power** from renewables, more than the rest of the US and many other top renewable energy generating countries. CA's power generation from renewables **rose 24%** between 03-07.



# CA % OF US GREENTECH PATENTS

Total Green Tech Patents Top Ranking States in Patents Registered			
	# of Patents Registered	Ranking	
	2002-07	2002-07	1990-1995
California	607	1	1
New York	539	2	7
Michigan	444	3	7
Connecticut	273	4	10
Massachusetts	174	5	3
Ohio	143	6	2
Texas	126	7	12
New Jersey	118	8	6
Illinois	100	9	11
Pennsylvania	100	9	5

## 2002-2007 Patents

#1 SOLAR: 148

#1 BATTERY: 203

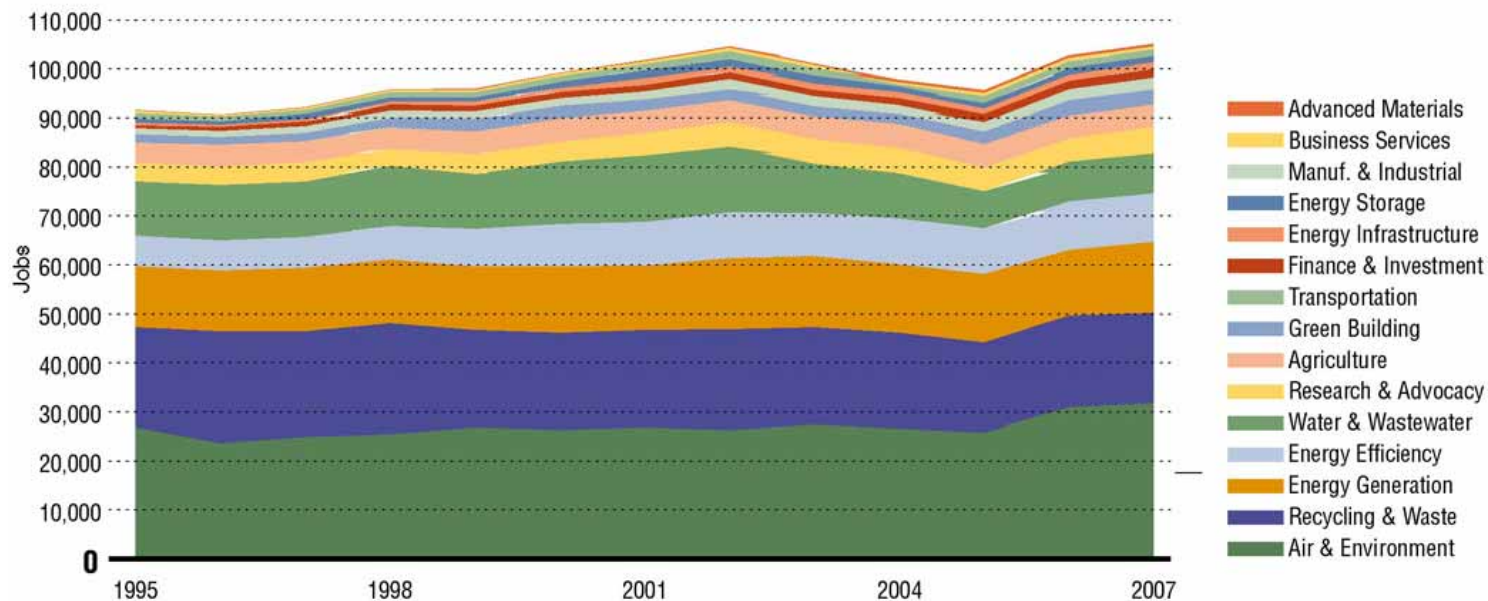
#3 HYBRID SYSTEM: 31

#3 FUEL CELL: 164

#1 WIND: 61



# CALIFORNIA GREEN JOBS



From 2005-2007 green jobs grew by **10%**, while statewide job growth in all sectors was only 1%.





# 1.5 MILLION JOBS CREATED FROM EE

	1972	1977	1982	1987	1992	1997	2002	2007	Total
Agriculture	—	36	112	204	266	631	849	869	2,967
EnergyRes	—	(0)	(1)	(1)	(0)	(1)	(1)	(1)	(5)
ElecPwr	—	(266)	(1,140)	(2,236)	(3,405)	(4,720)	(5,809)	(5,944)	(23,520)
OthUtl	—	(12)	(78)	(2)	13	71	77	79	149
Construction	—	—	—	—	—	—	—	—	—
Light Industr	—	821	2,688	4,593	6,095	8,392	9,247	9,463	41,300
OilRef	—	(14)	(6)	(9)	(10)	(14)	(24)	(25)	(102)
Chemica	—	48	190	448	764	555	2,234	2,287	6,526
Cement	—	(0)	(0)	(0)	(0)	(0)	(0)	(0)	(0)
Metals	—	2	1	4	(5)	(16)	(16)	(16)	(46)
Machinery	—	14	26	54	44	(38)	(51)	(52)	(2)
Semicon	—	0	0	3	8	176	318	325	830
Vehicles	—	20	38	133	133	240	427	437	1,428
OthInd	—	37	125	265	397	1,136	1,770	1,811	5,541
WhlRetTr	—	4,740	15,254	32,236	46,139	83,118	136,402	139,587	457,475
VehSales	—	—	—	—	—	215	0	0	215
Transport	—	9	31	(211)	76	202	305	312	724
FinInsREst	—	1,191	5,340	15,075	30,808	21,500	34,201	35,000	143,114
OthPrServ	—	3,063	11,456	25,848	45,596	64,397	96,352	98,602	345,313
PubServ	—	74	3,360	22,488	56,060	98,866	148,691	152,163	481,703
<b>TOTAL JOBS</b>	—	9,763	37,396	98,892	182,977	274,710	424,974	434,898	1,463,611

Over the last 30 years, household energy efficiency contributed 1.5 million new fulltime jobs in California with total payrolls of **over \$45 billion.**



# ENERGY EFFICIENCY ECONOMIC BENEFITS: 2008-2020

## **CA Air Resources Board Draft Scoping Plan:**

- Creates over 403,000 climate action and efficiency jobs (increasing real household incomes by \$48 billion)
- Increases GSP by \$76 billion
- Achieves 100% of the AB 32 GHG emission reduction targets



# THE MOST EXPENSIVE THING WE CAN DO IS NOTHING

**ECONOMIC DAMAGE AND ASSET RISK ESTIMATES FOR CALIFORNIA (2006 USD billions)**

	Damage Cost/Year		Assets at Risk
	Low	High	
Water	NA	0.6	5
Energy	2.7	6.3	21
Tourism and Recreation	0.2	7.5	98
Real Estate	0.2	1.4	900 Water
	0.1	2.5	1,600 Fire
Agriculture, Forestry, Fisheries	0.3	4.3	113
Transportation	NA	NA	500
Public Health	3.8	24.0	NA
<b>TOTAL</b>	<b>7.3</b>	<b>46.6</b>	

“It is not the strongest of the species that survives, nor the most intelligent, but the one most responsive to change.”

*-Charles Darwin*

