



Healthy School Environments

California Green Schools Summit
December 11, 2009

Cathy Davis
US EPA
Office of Children's Health Protection
and Environmental Education
davis.catherinem@epa.gov
202.564.2703

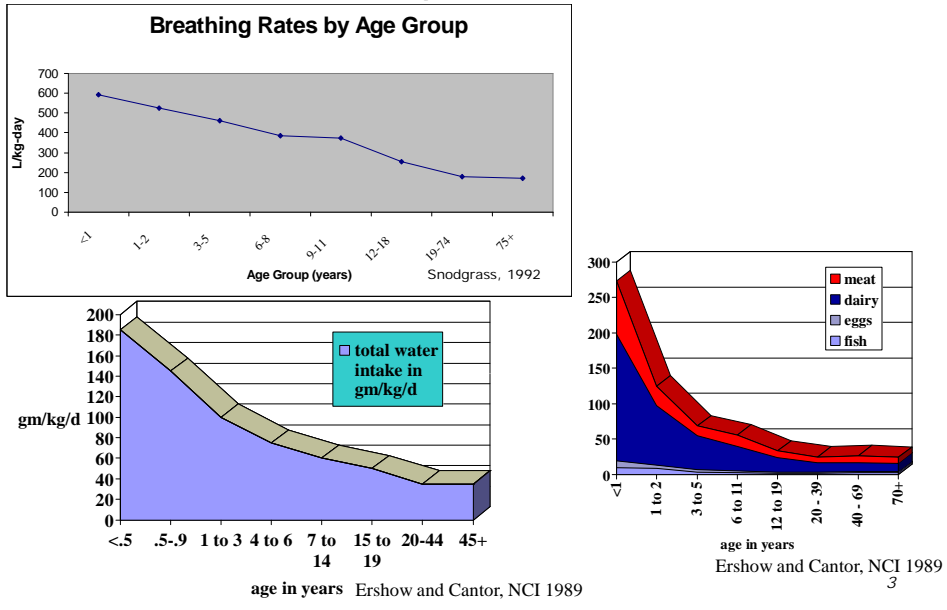
1

Why Care About Healthy Schools?

- Susceptible age groups
- High occupancy rate
- High occupant density
- Many schools in poor condition
- Disparities among those impacted
- Many environmental health issues
- Physical school environment impacts health, performance and productivity
- Financial impacts

2

Susceptible Age Groups



Many Schools in Poor Condition

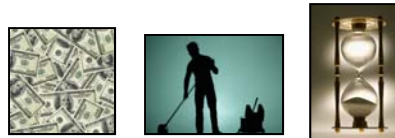
- 33% of US schools in need of extensive repair or replacement (Department of Education 1999)



Maintenance challenges



Resource challenges



School environmental issues

- Indoor air quality
- Chemical/hazardous material exposures
- Contaminated sites
- Outdoor air
- Physical factors
- Safety/injury prevention
- Food “environment”
- Physical activity

5

Financial Impacts

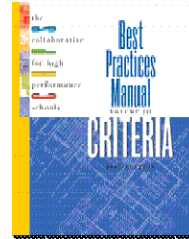
- What can happen if you *don't* focus attention on environmental risks...
 - Loss of funding tied to attendance/performance
 - School closings
 - Temporary and permanent
 - Large associated costs
 - Potential increased liability
 - Loss of community trust

“Ballou High School May Be Shut for Month
Mercury Cleanup Continues;
Classes Planned Elsewhere”
-- Washington Post
Sunday, October 5, 2003

6

High Performance Schools Resources

- Rating Systems
 - Collaborative for High Performance Schools (CHPS)
 - www.chps.net
 - LEED– Leadership in Energy and Environmental Design
 - www.usgbc.org
- Indoor Air Quality *Design* Tools for Schools
 - www.epa.gov/iaq/schooldesign
- Greening America's Schools: Costs and Benefits (Kats 2006)



www.epa.gov/schools

7

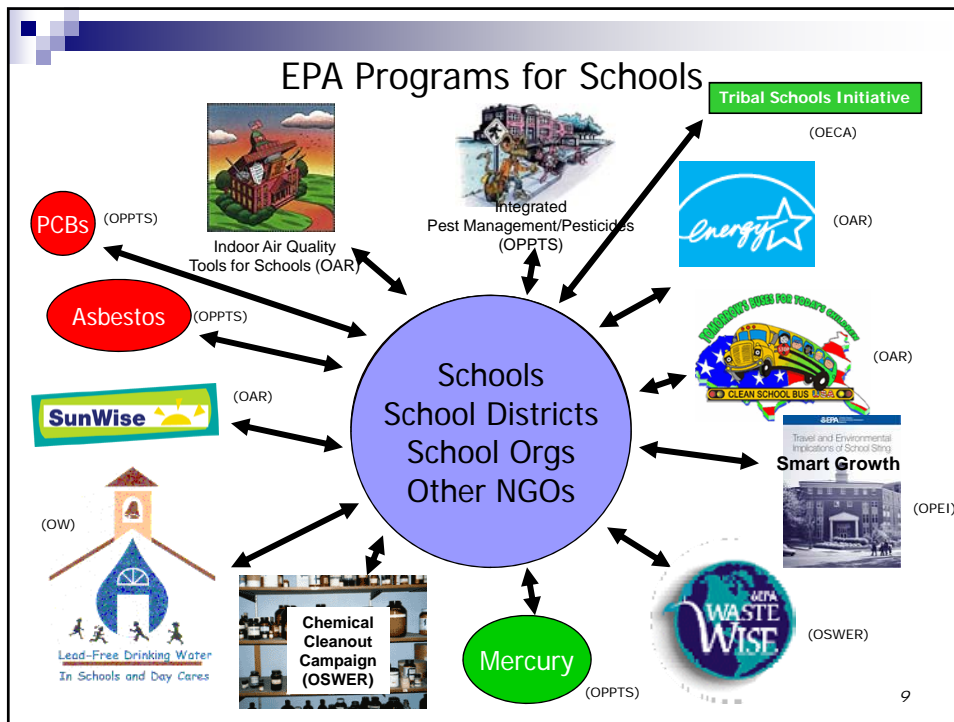
HealthySEAT

Healthy School Environments Assessment Tool





- Free *software* tool to:
 - Assess environmental health and safety conditions in all schools through periodic self-inspections
 - Identify deficiencies
 - Prevent problems *before* they arise
 - Track corrective actions
 - Produce compelling data on facility conditions and needed improvements
 - Educate staff
- Includes all EPA regs. and guidance *plus* info from:
 - NIOSH, DOT, CDC, CPSC, DoEd
- <http://epa.gov/schools/healthyseat>

8



National Policy Direction

- Coordinating EPA schools programs
- Increasing implementation of existing programs
- Developing guidelines
 - School Siting
 - Healthy High Performance Schools
- Increasing collaboration US Department of Education



Information on all EPA
School Programs:

<http://epa.gov/schools>

davis.catherinem@epa.gov
202.564.2703